

Introducing
Side Entry Tinel-Lock Ring



Side Entry Tinel-Lock Ring



KEY FEATURES

Low profile, buckle-free termination

One-piece construction with interlocking ends

Superior Performance — uniform recovery force generated by the shape-memory ring gives the termination excellent mechanical and electrical properties

Environmental Operating Range — The ring can withstand temperatures up to 200°C

Ease of installation — Rings can be installed in seconds using either a resistance heater or a simple heat gun. In either case, thermochromic paint applied to the ring changes color to indicate when the ring has been heated to full recovery.

DESCRIPTION

The side entry Tinel-Lock ring is a heat recoverable metal braid terminator, which provides a method of joining a gross cable or harness shield to a customer built connector backshell or other termination device, without repositioning the ring on the harness (side entry). This ring can be easily removed.

APPLICATIONS

Harness over braid termination and cable screen termination to Tinel-Lock adapter.

MECHANICAL

Pull off force - Size 04 - 08:	100 lbs. nom.
Size 10 and above:	150 lbs. nom.

ELECTRICAL

Low DC connection resistance provides excellent 360° shielding termination

Connection DC resistance:	1 mΩ maximum
Operating temperature:	-65°C to 200°C

MATERIAL

Nickel-Titanium alloy

STANDARDS & SPECIFICATIONS

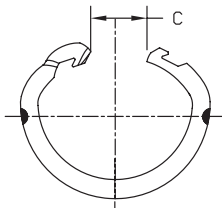
Application specification:	MIP-104
Product specification:	MPS-104

APPLICATION TOOLING

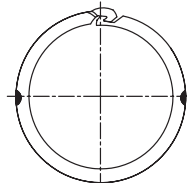
CV-1981-PID (heat gun)
AD-5000-TINEL-ASSY or H-3960-1-TINEL-KIT-120V
(Tinel-Lock installation tool)

Side Entry Tinel-Lock Ring

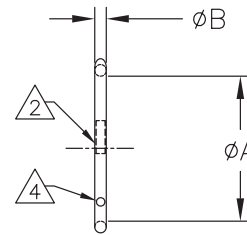
PRODUCT DIMENSIONS & PART NUMBERING SYSTEM



AS SUPPLIED



LATCHED POSITION

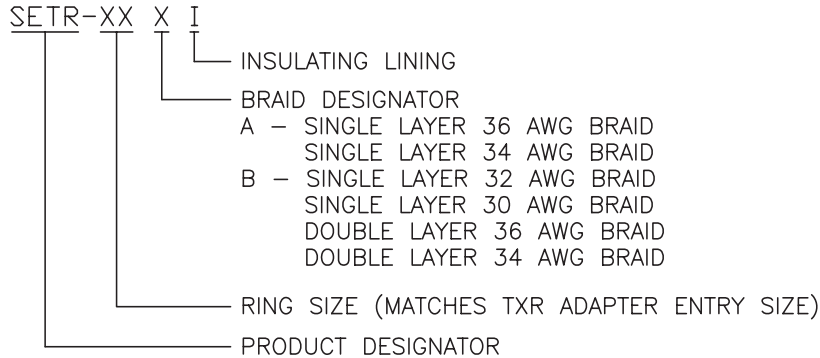


NOTE:
Side entry Tinel-Lock Ring is also available with adapter:

PN TXR40AB00-1008SA or SB

P/N	ϕA LATCHED (MIN)	ϕA MAX FREE RECOVERED	ϕB (REF)	C (REF)
SETR-04AI	.397 [10.08]	.379 [9.63]	.073 [1.85]	.25 [6.35]
SETR-04BI	.416 [10.57]	.398 [10.11]	.073 [1.85]	.25 [6.35]
SETR-06AI	.523 [13.28]	.499 [12.67]	.073 [1.85]	.38 [9.65]
SETR-06BI	.548 [13.92]	.523 [13.28]	.073 [1.85]	.38 [9.65]
SETR-08AI	.650 [16.51]	.620 [15.75]	.073 [1.85]	.50 [12.7]
SETR-08BI	.670 [17.02]	.639 [16.23]	.073 [1.85]	.50 [12.7]
SETR-10AI	.782 [19.86]	.744 [18.90]	.073 [1.85]	.60 [15.24]
SETR-10BI	.802 [20.37]	.763 [19.38]	.073 [1.85]	.60 [15.24]
SETR-12AI	.912 [23.16]	.867 [22.02]	.073 [1.85]	.75 [19.05]
SETR-12BI	.931 [23.65]	.886 [22.50]	.073 [1.85]	.75 [19.05]
SETR-14AI	1.040 [26.42]	.988 [25.10]	.073 [1.85]	.88 [22.35]
SETR-14BI	1.060 [26.92]	1.007 [25.58]	.073 [1.85]	.88 [22.35]
SETR-16AI	1.171 [29.74]	1.111 [28.22]	.073 [1.85]	1.0 [25.4]
SETR-16BI	1.191 [30.25]	1.129 [32.77]	.073 [1.85]	1.0 [25.4]
SETR-18AI	1.301 [33.05]	1.234 [31.34]	.073 [1.85]	1.13 [28.70]
SETR-18BI	1.320 [33.53]	1.252 [31.80]	.073 [1.85]	1.13 [28.70]

PART DESCRIPTION:



FOR MORE INFORMATION

Technical Support

Internet:	www.te.com/ADM
North America:	+1 (800) 522 6752
Asia Pacific:	+86 0 400 820 6015
Austria:	+43 1 905 601 228
Baltic Region:	+46 8 5072 5000
Benelux:	+31 73 6246 999
Czech Republic:	+420 800 701 462
France:	+33 1 34 20 86 86
Germany:	+49 6251-133 1999
Hungary:	+36 809 874 04
Italy:	+39 011-401 2632
Nordic:	+46 8 5072 5000
Poland:	+48 800 702 309
Russia:	+7495 790 790 2
Spain/Portugal:	+34 93-2910366
Switzerland:	+41 52 633 66 26
United Kingdom:	+44 800 267 666

Follow us on Twitter for all the latest product news @TEConnectivity, and on Facebook, TEConnectivity.

Connect with one of our Subject Matter Experts at www.DesignSmarterFaster.com

www.te.com/ADM

© 2013 Tyco Electronics Corporation. All Rights Reserved.

7-1773700-3 ADM/RRD 2.5M 06/2013

TINEL-LOCK, TE Connectivity and the TE connectivity (logo) are trademarks of the TE Connectivity Ltd. family of companies.

Other products, logos, and company names mentioned herein may be trademarks of their respective owners.

While TE has made every reasonable effort to ensure the accuracy of the information herein, nothing herein constitutes any guarantee that such information is error-free, or any other representation, warranty or guarantee that the information is accurate, correct, reliable current. The TE entity issuing this publication reserves the right to make any adjustments to the information contained herein at any time without notice. All implied warranties regarding the information contained herein, including, but not limited to, any implied warranties of merchantability or fitness for a particular purpose are expressly disclaimed. The dimensions herein are for reference purposes only and are subject to change without notice. Specifications are subject to change without notice. Consult TE for the latest dimensions and design specifications.

